

Unit Heaters

UEAS

Gas-Fired, Super High Efficiency, Separated Combustion, Low Static, 4 sizes, 131,000 - 305,000 BTUH Input

- Up to 93% thermal efficient
- 50-60°F temperature rise range
- Natural gas (propane conversion kit included)
- TCore® 409 stainless steel primary heat exchanger with extruded aluminum MacroChannel secondary heat exchanger (patent pending)



UDAS

Gas-Fired, Separated Combustion, Low Static, 14 sizes, 30,000 - 400,000 BTUH Input

- Sizes 30-400 certified for commercial/industrial heating application
- Sizes 30-125 carry additional approval for residential garage/workshop heating applications
- 82-83% thermal efficient, 50-60°F rise range
- TCore® titanium stabilized aluminized steel heat exchanger



UDAP

Gas-Fired, Power Vented, Low Static Axial Fan, 14 sizes, 30,000 - 400,000 BTUH Input

- Sizes 30-400 certified for commercial/industrial heating application
- Sizes 30-125 carry additional approval for residential garage/workshop heating applications
- 82-83% thermal efficient, 50-60°F rise range
- TCore® titanium stabilized aluminized steel heat exchanger



UDBS

Gas-Fired, Separated Combustion, High Static Blower, 14 sizes, 30,000 - 400,000 BTUH Input

- 82-83% Thermal efficient
- 45-75°F Rise range - Sizes 30-350
- 50-80°F Rise range - Size 400
- TCore® titanium stabilized aluminized steel heat exchanger
- Patented single burner combustion system



UDBP

Gas-Fired, Power Vented, High Static Blower, 14 sizes, 30,000 - 400,000 BTUH Input

- 82-83% Thermal efficient
- 45-75°F Rise range - Sizes 30-350
- 50-80°F Rise range - Size 400
- TCore® titanium stabilized aluminized steel heat exchanger
- Patented single burner combustion system



Unit Heaters

F

Gas-Fired, Gravity-Vented, Fan-Type, 25,000 - 400,000 BTUH Input

- Orifices for natural gas
- Aluminized steel heat exchanger
- Aluminized steel burner rack with stainless steel insert
- Spark ignited, intermittent safety pilot with electronic flame supervision
- Single-stage combination gas valve (field adjustable for high altitude operation)



B

Gas-Fired, Gravity-Vented, Blower-Type, 25,000 - 400,000 BTUH Input

- Orifices for natural gas
- Aluminized steel heat exchanger
- Aluminized steel burner rack with stainless steel insert
- Spark ignited, intermittent safety pilot with electronic flame supervision
- Single-stage combination gas valve (field adjustable for high altitude operation)



OH

Oil-Fired, Fan Type, 118,000, 173,000 and 229,000 BTUH

- 82% efficiency
- Full automatic, thermostatically controlled operation
- Low stress, 18 gauge steel heat exchanger
- Heavy, 13 gauge steel combustion chamber
- 115/1/60 supply voltage
- 24-volt control voltage



OT

Fuel Oil Tank, 250 Gallon, Single-Wall, Indoor, UL-Listed, applies to Models OH

- Designed with a work bench top that allows the tank to be used as a work area
- Large (12-1/2 sq. ft.) work surface with 2" side and rear
- Retainer lips and 3" legs for "toe space"



WS

Indoor, Suspended, Steam or Hot Water Hydronic, 13,000 - 350,000 BTUH Input, Air Volume 270 - 4,750 CFM

- Heat exchanger composed of steel tubes and aluminum fins spaced approximately 10-1/2 fins per inch
- Painted tubing heat exchanger and aluminum fins
- Hot water applications
- Fan/motor assembly includes galvanized fan guard
- Vertical or horizontal configuration



Large Capacity Unit Heaters

LDAP

Indirect Fired, Indoor, Downflow, Packaged Heater, 400 MBH, 800 MBH and 1200 MBH

- 83% thermal efficient
- 55°F temperature rise range
- Patented combustion system
- Titanium stabilized aluminized steel heat exchangers
- 208 or 230 single phase supply voltage



Direct-Fired Systems

RDF

Indoor/Outdoor, Direct-Fired, MUA, Airflow Capacity 1,000 - 28,000 CFM, Heating Capacity 20 - 3,000 MBH



ADF & ADFH

Indoor/Outdoor, Direct-Fired, MUA, Airflow Capacity 2,000 - 5,500 CFM, Heating Capacity 500 - 1,250 MBH

- Efficient and safe for space heating applications
- Very well suited for the following:
 - Warehouses & distribution centers with many loading dock bays
 - Providing makeup air to factories for pressurization
 - Restaurant kitchens replacement air for exhaust hoods
- For large volumes of ventilation air
- Good heat-to-air volume value
- Excellent temperature control with 25:1 modulation capabilities
- No venting or flue piping required



Duct Furnaces/Gas Heating

EEDU

Energy Efficient Indoor, Power-Vented, Gas-Fired, 75,000 - 400,000 BTUH Input

- Available for natural and LP gas
- Thermocore® aluminized steel heat exchanger with venturi-design tubes
- Intermittent spark pilot
- Single-stage 24-volt gas valve
- Aluminized steel heat exchanger
- Aluminized steel burners with stainless steel insert
- 120-volt supply voltage
- Factory-installed power venter



Duct Furnaces/Gas Heating

SC

Indoor, Separated Combustion, Gas-Fired, 100,000 - 400,000 BTUH Input

- Available for natural and LP gas
- 80% thermal efficient
- Intermittent spark pilot
- Single-stage 24-volt gas valve
- Aluminized steel heat exchanger
- Aluminized burners with a stainless steel insert
- 115 volt supply voltage
- 115 volt venter motor with stainless steel shaft
- 24 volt control voltage transformer



X

Indoor, Gas-Fired, Gravity-Vented, 75,000 - 400,000 BTUH Input

- Available for natural and LP gas
- 80% thermal efficiency
- Intermittent spark pilot
- Single-stage 24-volt gas valve
- Aluminized steel heat exchanger
- Aluminized steel burners with stainless steel insert
- 120-volt supply voltage



HRPD

Outdoor, Power-Vented, Dual, Eight Sizes Available, 250,000 - 800,000 BTUH Input

- Available for natural and LP gas
- Integral power vent system provides metered combustion air, dilutes flue products and eliminates the need for vent caps
- Thermocore aluminized steel heat exchanger with venturi-design tubes
- 80% thermal efficiency
- Aluminized steel heat exchangers (when inlet air temperature is below 40°F or temperature rise is less than 40°F, optional stainless steel heat exchanger is recommended)
- Aluminized steel burners with stainless steel insert
- 120-volt supply voltage



RP

Rooftop, Gas-Fired, Power-Vented, 125,000 - 400,000 BTUH Input

- Available for natural and LP gas
- Integral power vent system provides metered combustion air, dilutes flue products and eliminates the need for vent caps
- 80% thermal efficiency
- Thermocore aluminized steel heat exchanger with venturi-design tubes
- Aluminized steel heat exchanger (When inlet air temperature is below 40°F or temperature rise is less than 40°F, optional stainless steel heat exchanger is recommended)
- Aluminized steel burners with stainless steel insert
- 120-volt supply voltage

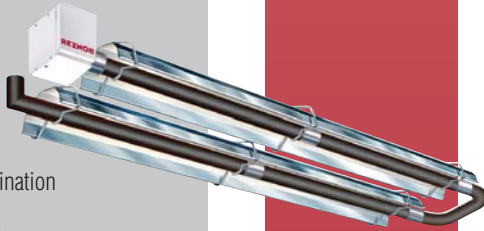


Gas Radiant Heaters

VPS

Indoor, Gas-Fired, Tubular Radiant, Low Intensity, 60,000 to 200,000 BTUH Input

- Available for natural and LP gas
- Full input rate for elevations up to 2,000 ft.
- 115/1/60 supply voltage
- Multi-try direct ignition with soft lockout
- Single-stage combination gas valve
- Pre-purge and post-purge



VPT

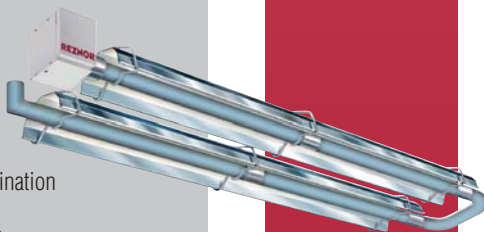
Indoor, Gas-Fired, Tubular Radiant, Low Intensity, 60,000 to 200,000 BTUH Input

- Available for natural and LP gas
- Full input rate for elevations up to 2,000 ft.
- 115/1/60 supply voltage
- Multi-try direct ignition with soft lockout
- Two-stage combination gas valve
- Pre-purge and post-purge

VCS

Indoor/Outdoor, Harsh Environment, Gas-Fired, Tubular Radiant, Low Intensity, 60,000 to 200,000 BTUH Input

- Available for natural and LP gas
- Stainless steel (300 series grade) burner box
- Full input rate for elevations up to 2,000 ft.
- 115/1/60 supply voltage
- Multi-try direct ignition with soft lockout
- Single-stage combination gas valve
- Pre-purge and post-purge



VCT

Indoor/Outdoor, Harsh Environment, Gas-Fired, Tubular Radiant, Low Intensity, 60,000 to 200,000 BTUH Input

- Available for natural and LP gas
- Stainless steel (300 series grade) burner box
- Full input rate for elevations up to 2,000 ft.
- 115/1/60 supply voltage
- Multi-try direct ignition with soft lockout
- Two-stage combination gas valve
- Pre-purge and post-purge

Gas Radiant Heaters

RIHN, RIHVN, RIHL & RIHVL

Indoor, Gas-Fired, High Intensity, Infrared, 30,000 - 200,000 BTUH Input for Natural Gas, 50,000 - 120,000 BTUH Input for Propane

- 115 volt operation for single-stage models, 24 volt operation for 2-stage models
- Direct spark ignition, 100% safety shut-off
- Solenoid gas valve, 1/2" NPT inlet
- Ceramic combustion surface temperature up to 1850°F, capable of reaching full intensity temperature in less than 30 seconds
- Seamless aluminized steel plenum chamber with stainless steel ceramic tile retainer clips
- Venturi mixer of spun metal construction for precision metering of air/gas mixture
- Highly polished aluminum reflector
- Balanced suspension holes, 3/8" diameter



Destratification

AEB

Vertical, Indoor or Outdoor, Air Turnover Unit with Optional Heating, Cooling Capacity 3,000 - 150,000 CFM - 7.5 Ton to 200 Ton, Heating Capacity 200 - 6,000 MBH (Output)

- Indirect fired designed for indoor or outdoor installation where air turnover (destratification) is desired
- Hinged access doors with stainless steel piano hinges, compression latches and safety switch
- Numbered control wiring, terminal strip and component identification labels
- EEPAC high efficiency fan motor with adjustable 1.5 s.f. V-Belt drive
- Control transformer with service switch and circuit breaker
- All wiring external to control cabinet within BX cable or conduit



MAPS® Packaged Systems

RCC, RDC, RDCC, RECC, REDC, RCB, RDB, RDCB, RDDB, RECB, REDB

Cooling, Heating, Dehumidifying
MUA Rooftop Systems Cool and Heat
High Volumes of Outside Air, Cooling
Capacity 3,600 - 12,500 CFM – 20
Tons to 60 Tons

- IQ digital controller
- 20% - 100% capacity control
- Modulated capacity scroll compressor with internal motor overload
- Fully interlaced coils
- Double wall construction standard - R9 or higher value
- Hinged access doors with handles
- Re-Heat Pump™ dedicated reheat cycle
- 2 - 4 staged control
- Optional SCR control
- 3 - 8 Stages of cooling
- 6:1 gas modulation
- Natural and propane gas
- Hot gas reheat



Dedicated Outdoor Air Systems (DOAS)

ZQYRA

Hybrid IAQ Ventilator, 600 - 1,500
CFM

- Modulating direct expansion heat pump system
- Durable total enthalpy wheel (ARI Certified)
- Field convertible vertical or horizontal flanged supply/return air openings
- Outdoor intake & exhaust rain hoods
- MERV 8 filters for outside and return air streams
- Long lasting G90 painted exterior
- Full double wall insulated construction in supply air stream
- Bottom lifting lugs
- Simple user interface to setup and control unit
- Supply & return fans: electronically commutated motor (ECM) - 96% efficiency
- 10kW auxiliary heat
- SCR control of auxiliary heat
- Unit mounted display
- Corrosion-proof sloped drain pan



Dedicated Outdoor Air Systems (DOAS)

YDHA

Space Conditioning, 1,000 - 10,000
CFM – 5 Tons to 30 Tons, Heating
Capacity 75 - 600 MBH Gas Heat –
10 - 90 kW Electric Heat

- High efficiency digital scroll technology
- Exceeds ASHRAE standard 90.1 requirements
- Includes T_{CORE}³® condensing heat technology
- Fully interlaced coils
- Compressor anti-cycle programming
- Natural gas or propane furnace
- Double wall foam panel construction – R13
- Hinged access doors with slam latches
- Condensing gas heat (92%)
- Integral energy recovery
- Low ambient dehumidification operation
- Slide out: heat exchanger(s), fan & wheel



YDMA

Makeup Air Ventilation, 1,000 - 10,000
CFM – 5 Tons to 30 Tons, Heating
Capacity 75 - 800 MBH – 10 - 90 kW
Electric Heat

- High efficiency digital scroll technology
- ECM condenser fans and optimized coil designs
- Exceeds ASHRAE standard 90.1 requirements
- Includes T_{CORE}³ condensing heat technology
- Fully interlaced coils
- Compressor anti-cycle programming
- Natural gas or propane furnace
- Double wall foam panel construction – R13
- Hinged access doors with slam latches
- Condensing gas heat (92%)
- Integral energy recovery
- Low ambient dehumidification operation
- Slide out: heat exchanger(s), fan & wheel



Limited Product Warranty. Reznor warrants to the original owner-user that these products will be free from defects in material or workmanship. For specific details see actual warranty or contact your Reznor sales representative.

Electric Heaters

EGEB

Cyclone Commercial Unit Heater, 1 or 3-Phase

- Almond color
- Epoxy/polyester powder paint finish
- 208V, 240V, 277V, 347V, 480V, 600V
- Draw-through design for more evenly heated air
- Specially designed outlet diffuser provides maximum air velocity
- Individually adjustable louvers
- High-limit temperature control with automatic reset
- 18- and 20-gauge steel



EGHB

Industrial Suspended Unit Heater

- Almond color
- Epoxy/polyester powder paint finish
- 208V, 240V, 277V, 347V, 480V, 600V
- 1 or 3-phase, some units may be field converted from 3 to 1-phase
- 18 and 20-gauge steel
- Adjustable louvers to direct airflow
- High-limit temperature control with automatic reset



EGW

Economical Unit Heater, 240/208V, 1-Phase

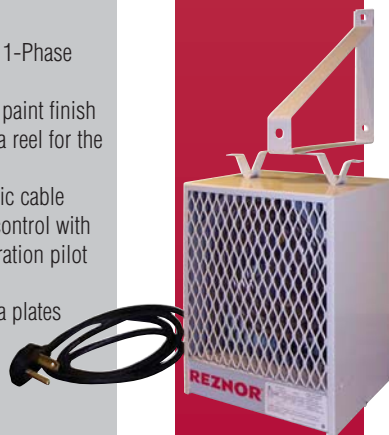
- Almond color
- Epoxy/polyester powder paint finish
- 20-gauge steel
- Adjustable louvers to control airflow
- High-limit temperature control with automatic reset (first level) and single operation thermal fuse (second level)



EGP

Portable Heater, 240/208V, 1-Phase

- Almond color
- Epoxy/polyester powder paint finish
- Handle may be used as a reel for the electric cable
- 6 ft. (2 m) molded electric cable
- High-limit temperature control with automatic reset and operation pilot light
- Electrical insulating mica plates



* Custom colors available upon request

Electric Heaters

EXUB

Explosion-Resistant Unit Heater

- Red color
- Epoxy/polyester powder paint finish
- 208V, 240V, 480V, 600V
- 1 or 3-phase
- 14-gauge steel cabinet
- Adjustable anodized aluminum louvers
- Cast aluminum control and element enclosure lids NEMA Type 7 and 9 with O-ring
- Multiple horizontal stiffening fan guard wires



EWHB

Wash Down Unit Heater, 1 or 3-Phase

- 208V, 240V, 480V, 600V
- 16-gauge, stainless steel, moisture and corrosion resistant housing
- Adjustable, stainless steel outlet louvers
- Stainless steel rear grille to protect against accidental contact with the fan blade
- High-limit temperature control with automatic reset (manual reset available upon request)
- NEMA 4X non-metallic electrical enclosure
- Disconnect switch (40A maximum) available



ECR & ECS

Ceiling Forced-Air Diffuser

- White, almond, metallic silver, bronze, metallic charcoal, aluminum, semi-gloss black colors*
- Epoxy/polyester powder paint finish
- 208V, 240V, 277V, 347V, 480V, 600V
- 1 or 3-phase
- Outlet grille made of flat ribbon wire
- High-limit temperature control with automatic reset



EMC

Forced-Air Cabinet Unit Heater

- White, almond, metallic silver, bronze, metallic charcoal, aluminum, semi-gloss black colors*
- Epoxy/polyester powder paint finish
- 208V, 240V, 277V, 347V, 480V, 600V
- 1 or 3-phase
- 18-gauge steel
- Extruded aluminum bar grilles
- Field changeable air inlet and outlet
- High-limit temperature control with automatic reset





Electric Heaters

EHA

Forced-Air Architectural Wall Heater

- White, almond, metallic silver, bronze, metallic charcoal, aluminum, semi-gloss black colors*
- Epoxy/polyester powder paint finish, optional anodized aluminum
- 120V, 208V, 240/208V, 277V, 347V, 480V, 600V, 1-phase
- Extruded aluminum front grille, 1/8 in. (3.2 mm) thick
- Bottom air outlet
- High-limit temperature control with automatic reset

EHC

Commercial Wall Heater

- White, almond, metallic silver, bronze, metallic charcoal, aluminum, semi-gloss black colors*
- Epoxy/polyester powder paint finish
- 120V, 208V, 240/208V, 277V, 347V, 480V, 600V, 1 or 3-phase
- 18-gauge steel front cover
- Bottom air outlet
- High-limit temperature control with automatic reset

EHL

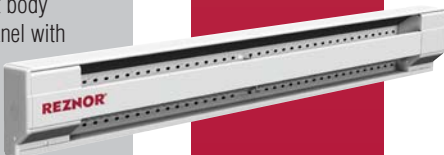
Residential Wall Heater

- White, almond, metallic silver, bronze, metallic charcoal, aluminum, semi-gloss black colors*
- Epoxy/polyester powder paint finish
- 120V, 208V, 240/208V, 1-phase
- 20-gauge steel cabinet
- 22-gauge steel front cover
- High-limit temperature control with automatic reset

EBHB

Electric Baseboard Heater

- White semi-gloss powdered paint finish, almond optional
- 4H pencil hardness epoxy/polyester powder coat paint finish
- 120V, 208V, 240/208V, 277V, 347V, 480V, 600V, 1-phase
- Robust 22-gauge tight fit body
- Sturdy 20-gauge front panel with design embossed lines
- Welded 20-gauge junction box to back wrap, easy rear access wiring panel



* Custom colors available upon request



Optional Accessories

CL23

7-Day Programmable Thermostat

- 24 Volt
- 2-stage Heating/Cooling
- Touch-Screen

CL33

Electronic Programmable Thermostat

- 24 Volt
- Up to 2 stages heating and/or cooling
- Auxiliary relay for damper changeover
- No for remote console having switches

CL77

4 Wire Space Mounted Sensor

Display provides the IQ system and the user:

- Space temperature value ($\pm 0.36^{\circ}\text{F}$ accuracy)
- Degree C or F selectable
- Space or neutral air temperature setpoint buttons
- Occupied/unoccupied mode button
- Fan speed control

CL78

Wall Mounted DDC Temperature Monitor

- Space temperature and humidity sensor with room setpoint adjustment
- 5 wire device, 3 wire communication
- 24 volt power and ground
- Compact room module allows the user to access the unit's internal time schedule, space temperature setpoints, space humidity and temperature values and unit mode commands

RB5

Wall Mounted Remote Monitory Display

- Display allows complete access to unit test features, schedules, discharge air setpoints, fan control, alarms and other unit operational setpoints
- 4 wire device can be mounted up to 500 feet way from the unit
- 2-wire 24 VAC power
- 2-wire communication



Specifications and illustrations subject to change without incurring obligation.

ReznorHVAC.com

REZNOR®

Reznor® is a registered trademark of Nortek Global HVAC, LLC. TCORE3®, TCORE2®, MacroChannel®, MAPS®, Thermocore® are registered trademarks of Nortek Global HVAC, LLC. Re-Heat Pump™ is a trademark of Nortek Global HVAC, LLC. © Nortek Global HVAC, LLC 2018. All Rights Reserved. Printed in U.S.A.

118F-0518